



ADU | **ACCESSORY DWELLING UNITS**

At Skyline Homes, we don't just build homes, we build dreams.

ADUs are becoming more popular because they are versatile. An ADU can serve as a private living space for a young adult returning from college, home for an elderly parent who needs to be closer to family, a home office, guest house, or possibly a home for rental income.

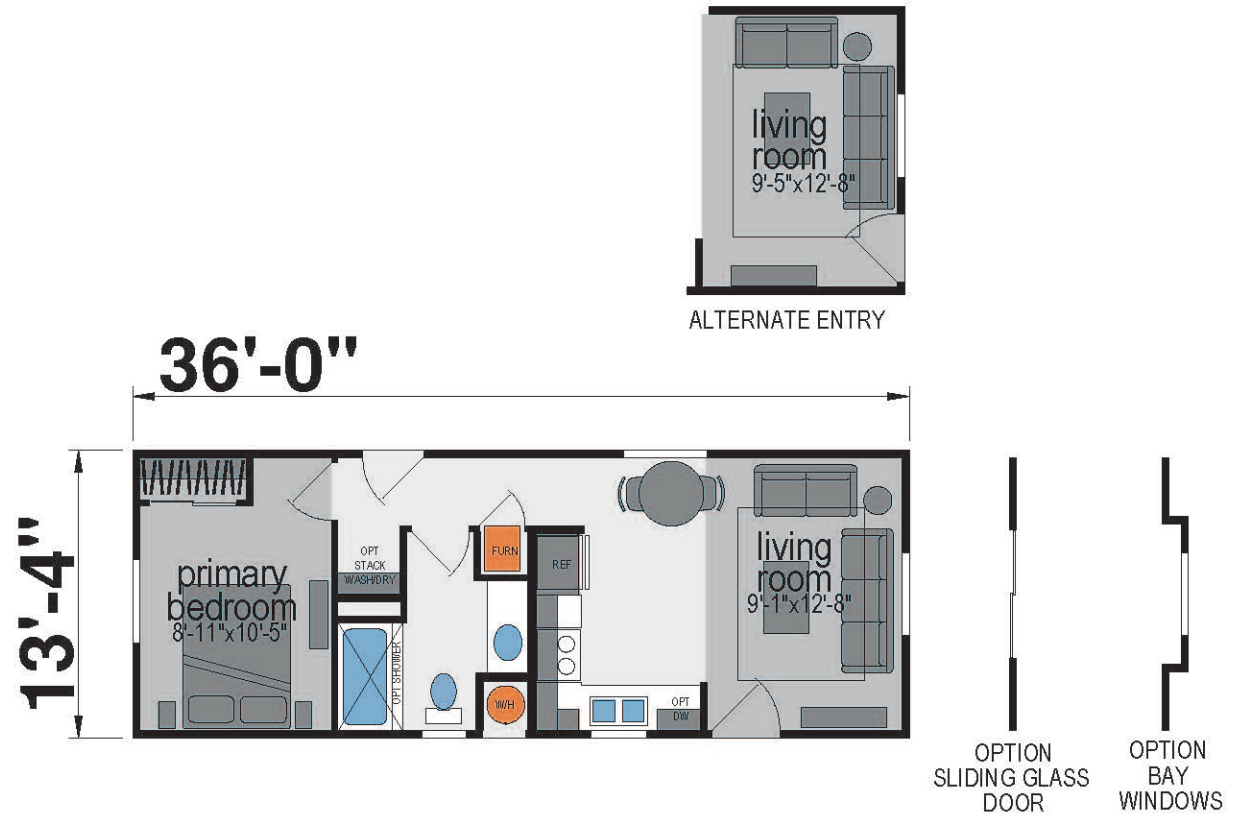
We design and build our ADUs with people in mind. From innovative and flexible designs, we are committed to providing features and finishes that can be enjoyed for a lifetime. We promise you will feel the difference of a Skyline Home. It's the feeling of comfort. A place you call home.

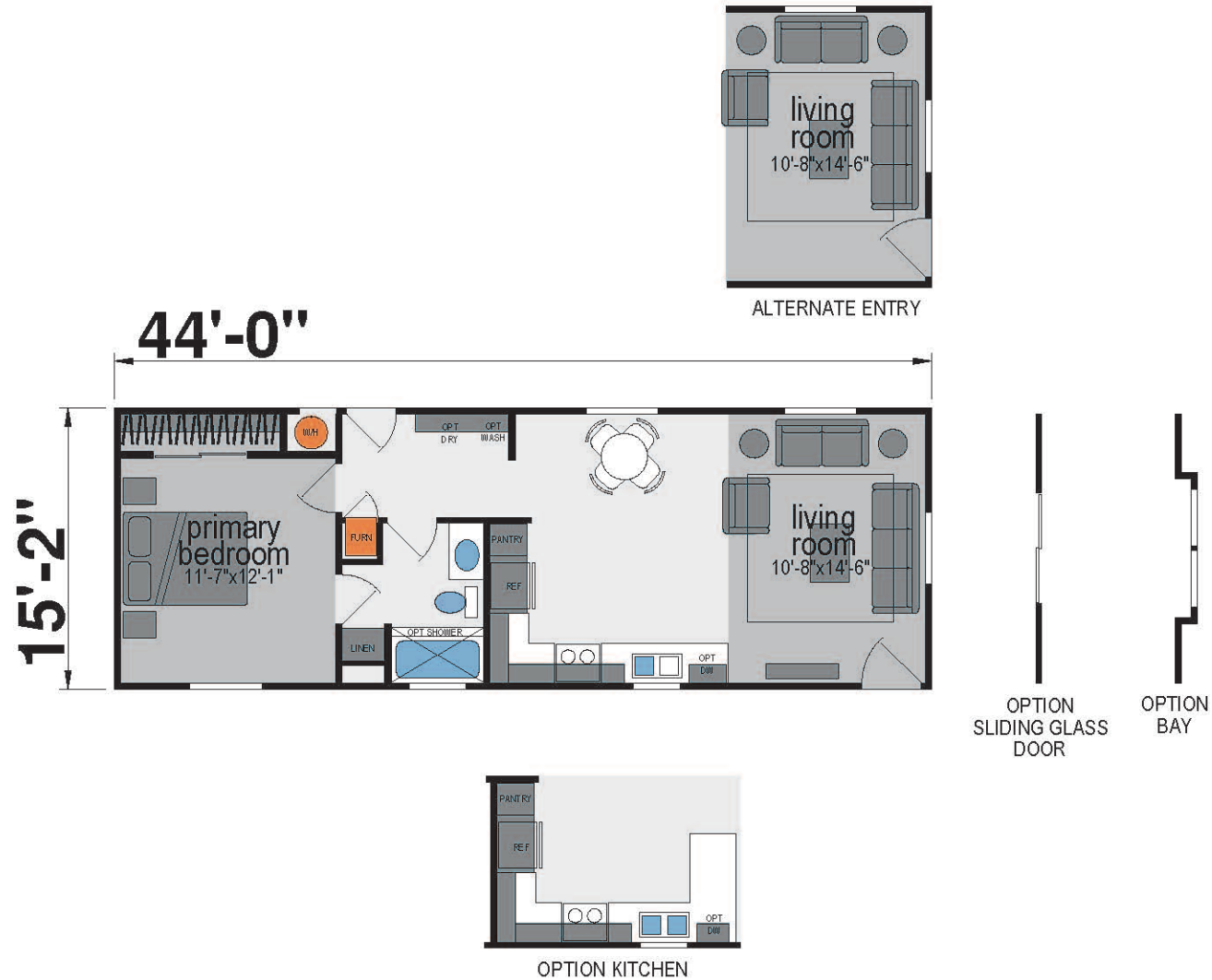




E517

1 BED-1 BATH
479 SQ.FT.

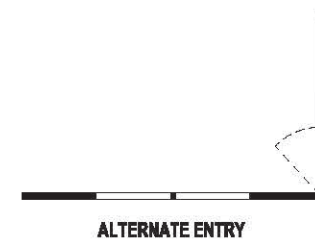
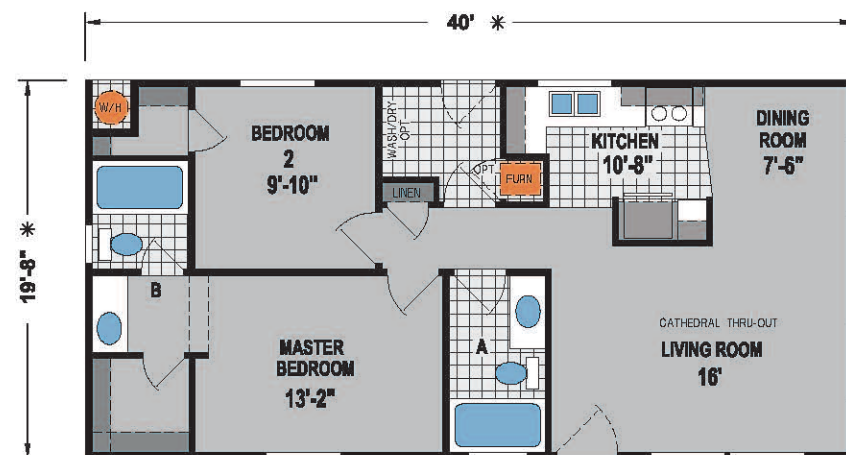
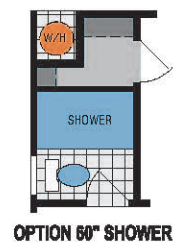


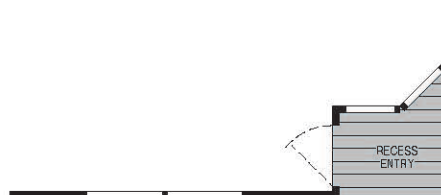
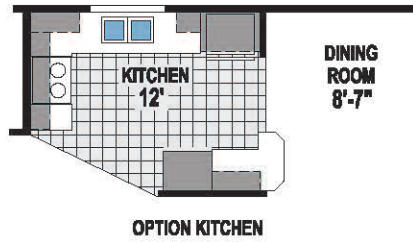


K200
 1 BED-1 BATH
 667 SQ.FT.

4610CTC

2 BED-2 BATH
786 SQ.FT.



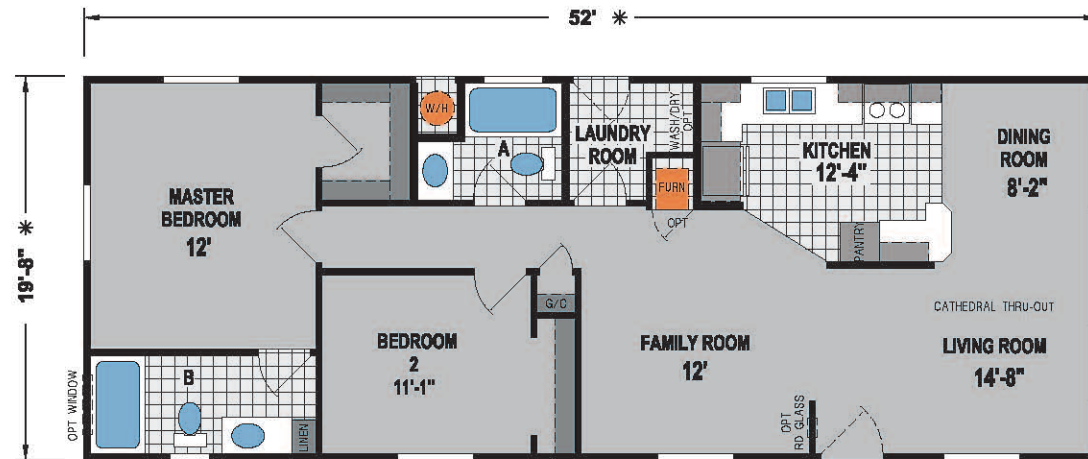


4604CTC

2 BED-2 BATH
944 SQ.FT.

4607CTC

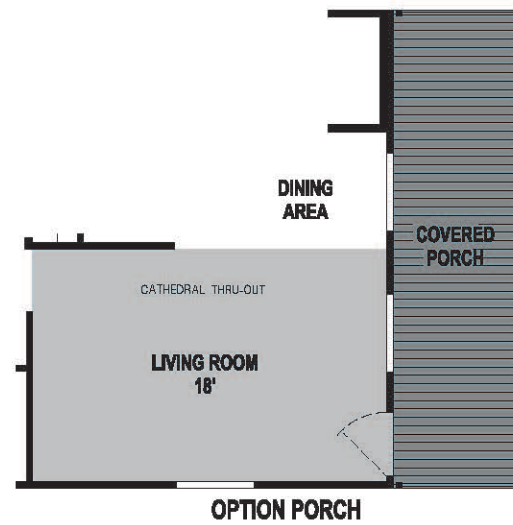
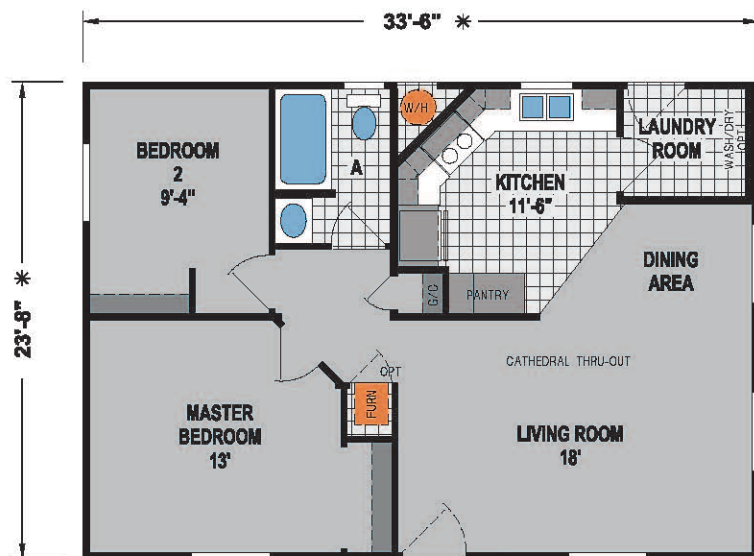
2 BED-2 BATH
1,022 SQ.FT.



OPTION 3RD BEDROOM



ALTERNATE ENTRY



K601CT

2 BED-1 BATH
793 SQ.FT.

3 BED-2 BATH
946 SQ.FT.

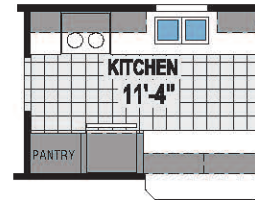




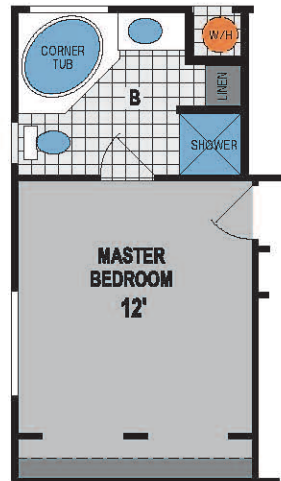
K610CTB

2 BED-2 BATH
867 SQ.FT.

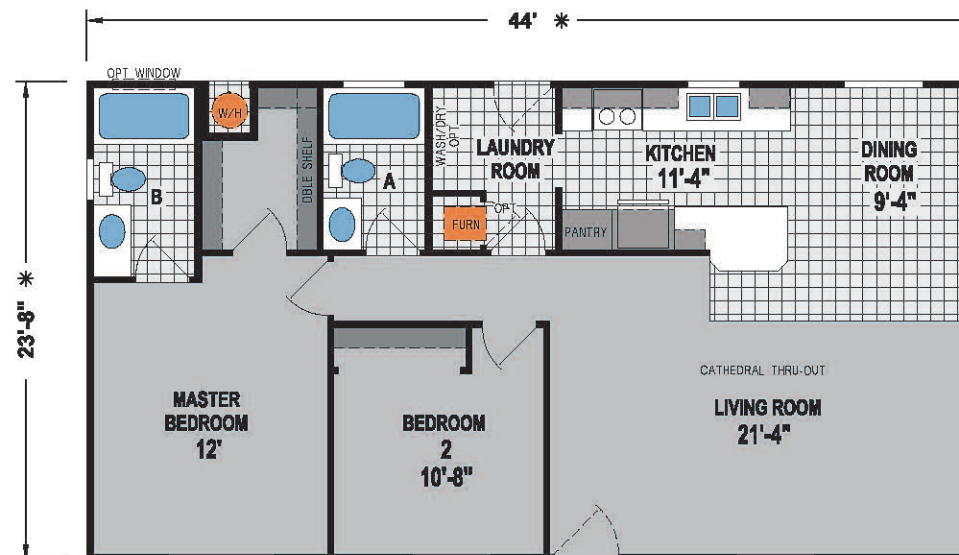




OPTION KITCHEN



OPTION MASTER
BEDROOM / BATH



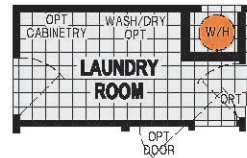
K604CT

2 BED-2 BATH
1,041 SQ.FT.

M105

3 BED-2 BATH
1,200 SQ.FT.

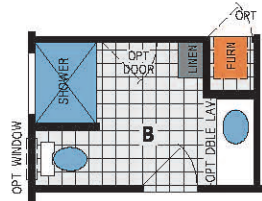




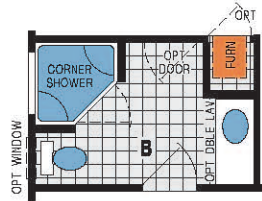
OPTION LAUNDRY ROOM



OPTION 60" SHOWER

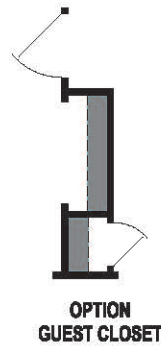


OPTION 48" SHOWER



OPTION CORNER SHOWER BATH

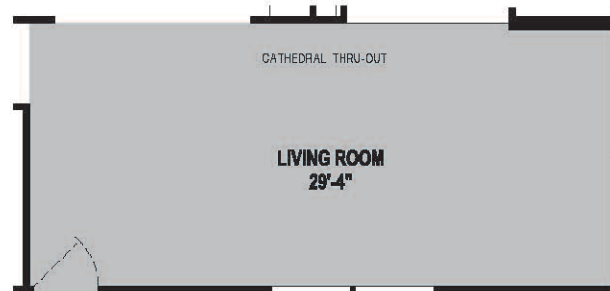
OPTION SLIDING GLASS DOOR



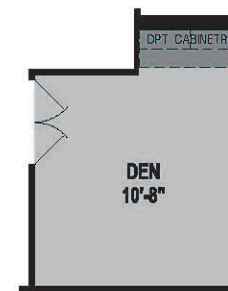
OPTION GUEST CLOSET



ALTERNATE DOOR LOCATION



OPTION 2BEDROOM CONFIGURATION



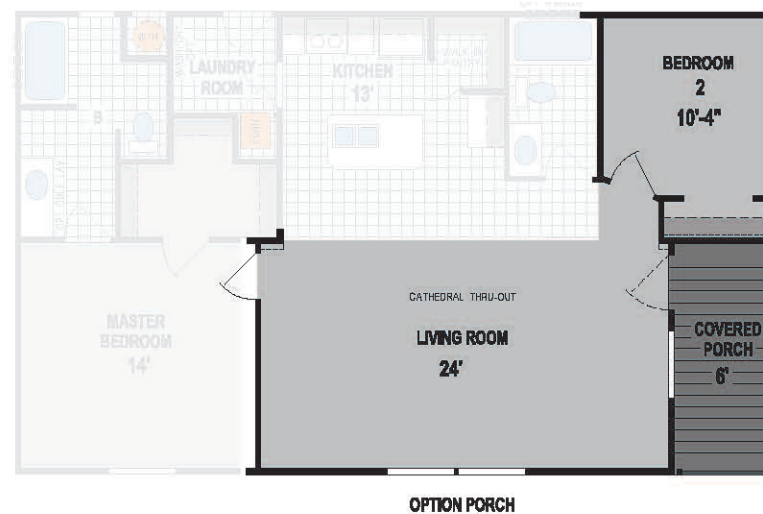
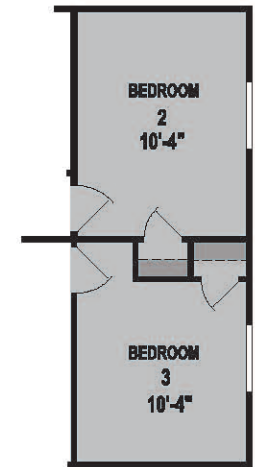
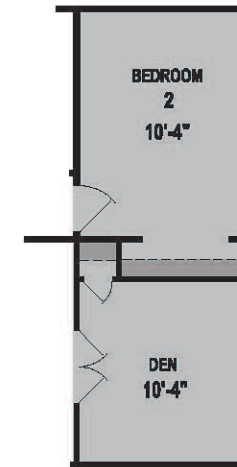
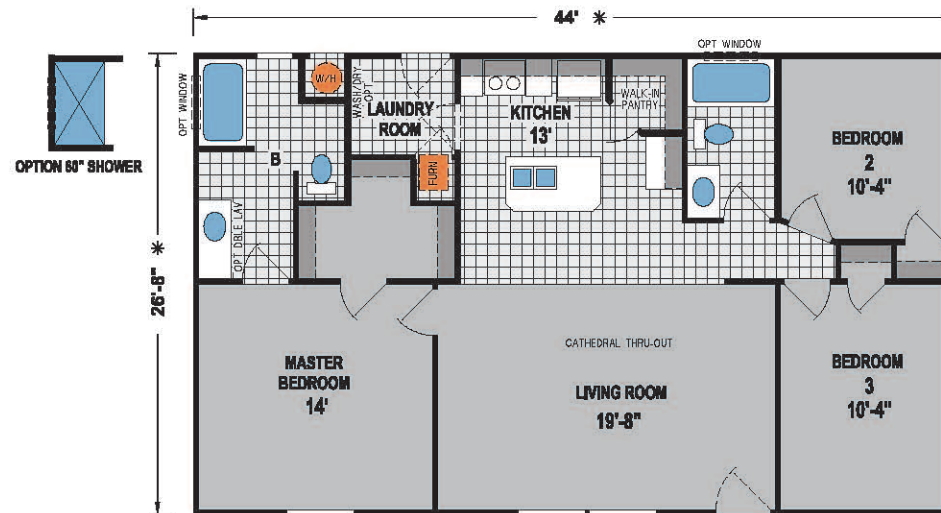
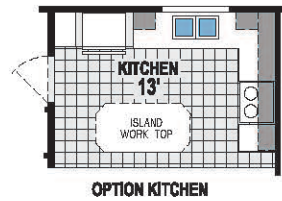
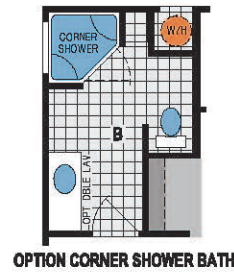
OPTION DEN

K770CT

3 BED-2 BATH
1,173 SQ.FT.

A3406CT

3 BED-2 BATH
1,173 SQ.FT.



STANDARD FEATURES

ACCESSORY DWELLING UNITS

CONSTRUCTION

- 9' Sidewalls with Flat Ceiling
- 2X6 Floor Joists (Per Plan)
- 2x8 Floor Joists (Per Plan)
- 2X4 Exterior Sidewalls
- R-33 Ceiling Insulation
- R-11 Wall Insulation
- R-22 Floor Insulation
- 20 lb. Roof Load
- 3:12 Roof Pitch
- 4:12 Roof Pitch (Single-Section Floor Plans)
- Tongue and Groove OSB Floor Decking
- Dual-Glazed Vinyl Framed Low-E Windows
- Steel Outriggers on Exterior Walls
- PEX Water Lines
- Shut-Off Valves at All Sinks and Toilets
- WUI Compliant Roof Vents

EXTERIOR

- Vertical Cement Fiber Siding
- Class "A" Architectural Roof Shingles
- Exterior Window Trim
- Exterior Light at Front and Rear Doors
- 36" 6-Panel Front Door with Deadbolt, Peephole and Knocker
- 32" Cottage Rear Door with Deadbolt
- Sliding Glass Door (Floor Plan Specific)
- 12" Front Overhang
- 12" Rear Overhang
- 6" Side Eaves (Per Plan)
- Semi-Gloss Exterior Paint

INTERIOR

- ½" Tape and Texture Drywall Throughout
- Sculptured Floor Molding and Door Casing
- Hand-Finished Knock-Down Wall Texture
- Low Sheen Interior Paint
- 2-Panel By-Pass Closet Doors (Floor Plan Specific)
- 2-Panel Interior Doors with 3-Mortised Nickel Hinges
- Lever Door Handles with Satin Nickel Finish
- Shaw® Carpet
- 3/8" Rebond Capet Pad
- Vinyl Flooring in Kitchen, Dining Room, Bathrooms and Utility Room (Per Plan)
- 2" Faux Wood Blinds with Faux Wood Valance
- Double Wood Shelf and Pole in Master Bedroom Wardrobe
- Single Wood Shelf and Pole in Guest Bedroom Wardrobe
- Wood Shelving in Hall Closet and Linen Closets
- Wood Shelf and Pole Above Washer/Dryer Area (Floor Plan Specific)
- Toe-Kick Registers in Kitchen and Bathrooms

KITCHEN

- Hardwood Shaker Style Cabinets
- 42" Tall Overhead Cabinets Kitchen
- Crown Molding on All Overhead Cabinets
- ¾" Adjustable Base and Overhead Shelves
- Large Kitchen Island (Floor Plan Specific)
- Full Extension Ball Bearing Drawer Guides
- Whirlpool® Brand Name Appliances Stainless Steel
- 18.1 Cu. Ft. Frost-Free Refrigerator
- 30" Deluxe Gas Range with Electronic Ignition, Window, Clock and Timer
- 30" Range Hood Vent
- Dining Room Chandelier
- Deep Stainless Steel Self Rimming Sink
- Single-Lever Faucet with Pull-Out Sprayer with Chrome Finish
- Bank of Drawers
- Laminate Countertop
- Laminate Crescent Edge
- Laminate Backsplash

ELECTRICAL, HEATING & PLUMBING

- 100 Amp Exterior Electrical Panel Box
- G.F.I. Protected Outlets in Kitchen and Baths
- Exterior G.F.I. Protected Outlet
- USB Receptacle in Kitchen Area
- Smoke Detectors with Battery Back-Up
- Switch Wall Outlet in Living Room and Bedrooms
- Dining Room Chandelier
- Shut-Off Valves Throughout
- Silent Rocker Light Switches
- 3-Way Switch in Hall and Utility Room
- 40-Gallon Gas Water Heater
- Down Flow Gas Furnace
- Programmable Thermostat
- Plumb for Washer
- Prep for Gas Dryer
- Recessed Dryer Vent Box
- 4" Can Lights

BATHROOMS

- 60" One-Piece Fiberglass Tub / Shower
- China Self Rimming Sink with Overflow and Pop-Up Drain
- Single-Lever Diverter with Chrome Finish
- Dual-Control Faucets with Chrome Finish
- Elongated Water-Saver Commode
- Vanity Light Fixture
- Vanity Mirror with Beveled Edge
- Ceiling Exhaust Fan
- 36" High Countertop
- Laminate Countertop
- Laminate Crescent Edge
- Laminate Backsplash
- Full Extension Ball Bearing Drawer Guides
- Linen Closet – Master Bathroom
- Drawer Bank – Master Bathroom
- Beveled Medicine Cabinet
- Ventilation Window
- Towel Bar and Tissue Holder with Satin Nickel Finish
- Privacy Lock

POPULAR OPTIONS

- 2x6 Exterior Walls with R-19 Insulation
- Tankless Gas Water Heater
- Radiant Roof Barrier
- Skylights or Solar Tubes
- WUI Compliant Windows
- Fire Sprinkler System

Due to continuous product development and improvement, prices, specifications, and materials are subject to change without notice or obligation. Square footage and other dimensions are approximate. Exterior images may be artist renderings and are not intended to be an accurate representation of the home. Renderings, photos and floor plans may be shown with optional features or third-party additions. All floor plans and features are subject to local code approval. * Skyline is a brand of Champion Home Builders, Inc.

SKYLINE®

BUILDING YOUR HOME TO **GREEN** STANDARDS

- Engineered for efficient use of materials
- 80% of construction waste reused or recycled
- Use of engineered lumber
- Low V.O.C. adhesives and paint
- Formaldehyde-free insulation
- Sealed and tested ducting system
- High efficiency toilets
- Efficient distribution plumbing system
- Mechanical fresh air ventilation system







499 W Esplanade Ave, San Jacinto, CA 92583

(951) 654-9321



@Skylinehomes1951

Member:

